

Client Communication

Microbiology - Specimen Collection Device Change Introducing BD ESwab™ Collection Kit and A.C.T.® I Tube

Date Issued: August 7, 2019

Effective: August 19, 2019

As Pathology Laboratories, Inc. (PathLabs) continues to migrate its microbiology testing to ProMedica Laboratories (ProMedica PathLabs), we are introducing new collection and transport devices; namely, the BD ESwab™ Collection Kit and the A.C.T.® I Tube. The benefits of each new collection and transport device are further discussed below, along with specific instructions for use.

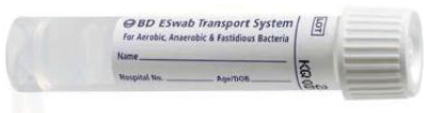
BD ESwab Collection Kit

During the month of August, PathLabs will begin distributing ESwab collection kits for Microbiology specimen collection and phasing out the Routine Bacterial Culturette (yellow cap) and the Mini Swab Culturette (green top). The introduction of the ESwab Kits will be a rolling conversion, so continue to use the supplies on hand and all new orders will be filled with new devices.

ESwab is a liquid-based multipurpose collection and transport system that maintains viability of bacteria and viruses for up to 48 hours at room temperature, except for Genital cultures and cultures for *Neisseria gonorrhoeae* which should be processed within 24 hours. The ESwab system collects and releases more specimen, significantly improving patient results and decreasing the need for repeat testing due to insufficient sample. In the laboratory, ESwab specimens are processed using standard clinical laboratory operating procedures for bacterial culture.

With ESwab, there are two different collection swabs available based on the body source of the specimen:

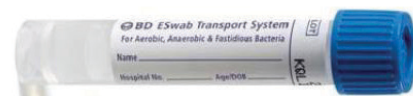
BD ESwab Regular Collection Kit (White Cap)



White cap device with liquid Amies and a regular flocked swab for collecting the following specimens: **nose, throat, vaginal and wound specimens**

Tests Include: Wound Culture (superficial), Strep Culture, GC Screen, Yeast Culture, Genital Culture, MRSA Culture, Throat Culture, Rapid Strep Screen and Rapid Strep Antigen

BD ESwab Flexible Mini-tip Collection Kit (Blue Cap)



Blue cap with liquid Amies and a mini-tip flocked swab designed for collection from any small orifice: **nasopharyngeal and pediatric specimens**

Tests include: Ear Culture, Eye Culture, RSV Antigen, Influenza A/B Antigen

BD ESwab Replaces the Following Culturettes:

Routine Bacterial Culturette (yellow cap)

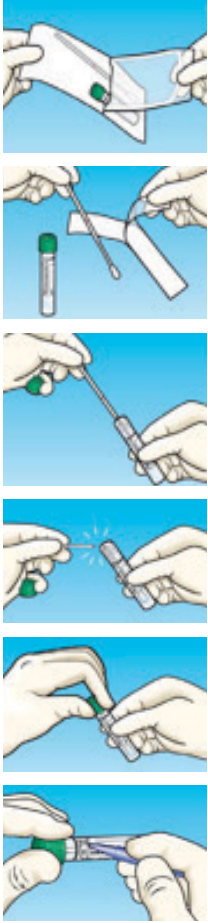


Mini Swab Culturette (green top)



Do NOT discard the yellow and green cap/double swab devices as this change will be a rolling conversion. All new orders will be filled with ESwab Collection Kits.

BD ESwab Collection Instructions



- Perform hand hygiene and put on gloves if necessary.
- Perform positive patient identification.
- Open the peel pouch.
- Remove the swab.
- Collect the patient sample using the swab. Avoid touching the swab applicator below the pink molded breakpoint as this could lead to contamination and incorrect test results.
- Remove the screw cap from the tube and insert the swab all the way to the bottom of the tube.
- Holding the swab shaft close to the rim of the tube, and keeping the tube away from your face, break the applicator shaft at the pink breakpoint indication line.
- Screw the cap on tightly to prevent leakage.
- Dispose of the swab shaft in a regular trash receptacle.
- Apply patient identification label or write patient information on the tube.
- Follow the standard operating procedures of transport and testing for your facility.
- Remove gloves if necessary and perform hand hygiene.

Additional Notes

The ESwab Liquid Amies fluid maintains the viability of diverse bacteria. Do not send a dry ESwab as this will lead to unsatisfactory results.

If the tube spills its contents prior to inserting the swab, the liquid is non-toxic. Simply put the swab into another tube before sending to the laboratory and discard spilled tube.

If the tube spills after contamination, follow procedure for blood and body fluid cleanup. Refer to your facility's infection control manual.

If contaminated fluid splashes onto the personnel collecting the sample, treat as a blood and body exposure. Refer to your facility's infection control manual.

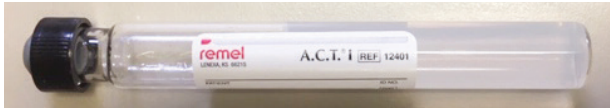
A.C.T. I Tube

Use of the A.C.T. (Anaerobic Culture Transport) I tube for anaerobic culture will begin during mid-August 2019. The Anaerobic Culturette (Blue Cap Gel) is being replaced with the A.C.T. I tube. The A.C.T. I tube is a glass tube with a black screw cap (Port a cul tube) for transport for anaerobic cultures. This tube is prepared in a reduced state and maintained in an oxygen-free environment. The nonnutritive medium maintains a favorable PH and provides a moist, inert, protective environment preserving the specimen as well as minimizing overgrowth of competing microorganisms.

A.C.T. I Tube Continued on Page 3

A.C.T. I Tube (Continued)

The A.C.T. I tube will replace the Blue Cap Gel (anaerobic) culturette, beginning with the remaining Microbiology migration:



NEW



OLD

(No longer acceptable after Friday, August 16, 2019.)

Use this NEW tube for Anaerobic Cultures: Aspirates, Body Fluids (with no gram stain) and Tissues.

Additional Notes

No swabs will be accepted for insert into the A.C.T. I tube.

Sterile containers may also be used when necessary for collection of certain anaerobic specimen types.

The A.C.T. I tube is the preferred anaerobic collection and transport system. **The ESwab, for anaerobic cultures, will ONLY be accepted if collected from sites appropriate for anaerobes such as deep wounds and surgical sites (i.e., no superficial wounds).**

A.C.T. I Collection Instructions

- Disinfect the rubber stopper with appropriate disinfectant, such as alcohol.
- After collecting the specimen, push needle through the rubber stopper and slowly inject the specimen on top of agar.
- Carefully remove the needle and syringe; dispose of it in an appropriate sharps biohazard container.
- Label with appropriate patient information.
- Maintain A.C.T. I at room temperature.
- Send to laboratory for processing within 24 hours.

Supplies

Supplies are available through PathLabs' Supply Department for immediate distribution:

Email: supply@pathlabs.org | Phone: 419.255.4600, ext. 167 | Fax: 419.255.4636

If there are any questions, please call our Client Service Department at 419.255.4600, toll-free at 800.281.8804, your Account Executive, or ProMedica Laboratories' Customer Service at 888.471.4134. We are excited for this transition and the ability to enhance our service offering with new and improved technology available through the combined efforts of ProMedica PathLabs.

BD is property of Becton, Dickinson and Company.

ESwab is a trademark of COPAN ITALIA S.P.A.

A.C.T. is a registered trademark of REMEL INC.

Thank you for supporting Pathology Laboratories.